



To Become An Admired Malaysia-Based Engineering Company With Regional And International Operations in:

- infrastructure investments,
- manufacture and sale of water/water related products including OEM,
- M & E and process engineering design and build capabilities, and major civil engineering construction.

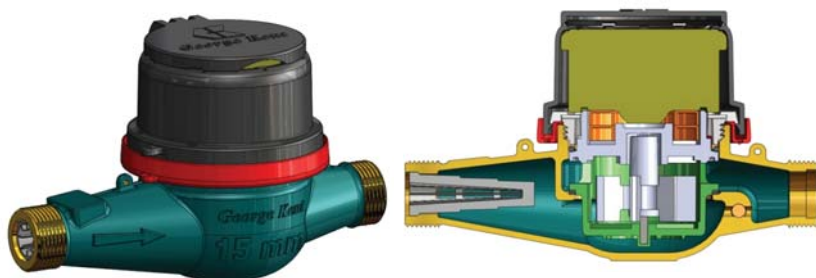
About “Customers”

George Kent (Malaysia) Berhad is an engineering-based company with diversified business interests in various industries. The company was established in 1936, a Malaysian-based company with active business interests in the global markets and is a renowned player in the water industry. **George Kent** has been a pioneer in many products and solutions and continued to be a market-leader in Malaysia in many industries. In recent years **George Kent** has successfully ventured into other new businesses such as construction and project management that has further strengthened its market position.

George Kent has an extensive range of products, equipment and services that can be integrated to provide total solutions. Its manufacturing unit that specializes in hot brass forging is the largest in the region and is equipped with state-of-the-art machineries, producing a range of brass products, fittings and components for the water, OEM and other related industries. **George Kent** is also a specialist in turnkey construction and infrastructure projects as well as providing customized solutions in Operation & Maintenance and project management.

With over 400 employees enables **George Kent** to develop Smart Solutions on the Green Technology platform that provides effective management and utilization of resources towards preserving the environment for future generations. Its respective business units have products that can be system-enabled to provide multi-dimensional monitoring, analysis and management to provide total solutions that meets technological pace of the increasing affluent market of the rapid changing global environment.

<http://www.georgekent.net/>



Benefits

- Message is conveyed easily with no communication breakdown.
- Reduce the design cycle time.
- Save cost on prototyping and physical testing.

Why IME

The implementation plans provided by IME are good and organize. They start from training until the reinforcement day to make sure the implementation is success.

They provide the best technical support and guidance during the transition period from switching 2D to 3D CAD. Their fast response time and the technical supports are well trained that shows their professionalism in solving our problem.

IME provide total solution and complete engineering services. With their rapid prototyping services, we can do the fitting test easily.

IME CASE STUDY

GEORGE KENT (MALAYSIA) BERHAD.

To Become An Admired Malaysia-Based Engineering Company With Regional And International Operations in:

- infrastructure investments,
- manufacture and sale of water/water related products including OEM,
- M & E and process engineering design and build capabilities, and major civil engineering construction.

Success Metrics

- Reduce the development time & cost with SolidWorks user friendly CAD software.
- Reduce file translation issue with mold supplier who is using SolidWorks.

Challenge

Engineers have been facing different issues when using 2D software to design as below:

- Difficult to communicate with top management and others who involve in the project by using 2D design.
- Difficult & time consuming to communicate with supplier on additional dimension, define the internal area, and draw out the design by running in 2D software.
- Over time consume on printing all the drawing and explain the details.
- Cause: People find it difficult to understand the design.

Solution

- Use SolidWorks to design in 3D and Simulation to perform analysis. Enable engineer to identify the critical area in the product design without creating prototype for testing in the beginning stage.
- Reduction of the disturbance flow by using FlowExpress analysis.
- eDrawings enable the management level to easily understand the product design in both 2D and 3D format, and non-cad user is able to access the information shared by cad user.
- Reduce the cost for consultation on generating desired report on environmental impact of the product by using Sustainability.

↳ Industry:
Manufacturing

Previous CAD :
AutoCad, Solid Edge

Product(s) Used :
SolidWorks & SolidWorks Simulation

About IME Technology

IME TECHNOLOGY is the most established SolidWorks Certified Sales, Training and Support Centre in this region with 19 years of experiences that we learned from our customers. Through innovation, we are committed in providing a wide range of professional services to our valued customers. Leading by 2 SolidWorks Elite Engineers and backup by 8 certified SolidWorks expert (CSWE), IME technical support team will ensure the partnership between SolidWorks, IME and our customer will grow, shine and sustain. Our complete total solutions include 3D design, Analysis, flow simulation, Data Management, technical documentation and training services. Get the best solution from the best provider in Malaysia.



IME TECHNOLOGY SDN. BHD. (356192-T)
22A, Jalan PJS 1/46, Petaling Utama, 4
6150 Petaling Jaya, Selangor, Malaysia.

Tel : +603-7783 6866
Fax : +603-7783 4384

Technical Support:
swsupport@cadcam.com.my

www.cadcam.com.my
www.imetech.com.my

Hotline: 1300-88-2797