



Delivering Technology Solutions™

IME CASE STUDY

About MVE Technologies Sdn Bhd

MVE Technologies was established in 1996, and was mainly involved in supplying and services of oil and gas products. In 2009, MVE started their choke and control valves programs with the support from MOSTI (Ministry of Science Technology and Innovation) of Malaysia.

MVE extensive expertise in valve design, together with integrated CAD/CAM (Solid-Works) systems fully exploits the opportunities for innovative and competitive engineering solutions whilst ensuring compliance with all relevant standards. MVE is committed in developing and marketing new products based on customers needs. MVE has put tremendous efforts in R&D to produce quality products and to ensure the design capabilities and engineered solutions are among the best.

MVE has been continuously invested in cutting edge technology such as 2D CAD, 3D Solid Modeling, Finite Element Analysis (FEA) and Computational Fluid Dynamics (CFD).

Benefits

- Positive results from software that enhance jobs in term of collaboration, integration with other software, 2D to 3D transition and data exchange without issue.

Why IME?

IME provides many meaningful and good activities like workshops and seminars that improve our skills. They have strong technical supports, giving the best guidance whenever we have a problem. Nonetheless, their products offer is attractive!



Valves

Surface Chokes
Control Valve



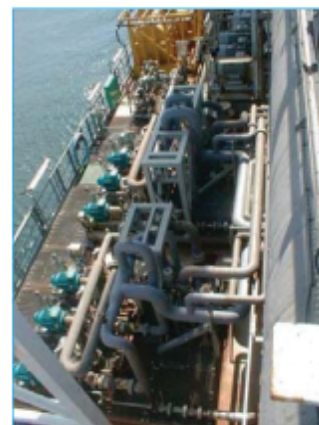
Instrumentations

Multiphase Meter



Pumps

Firewater Pump



Maintenance

Offshore & Onshore
Piping & Vessel

Success Metrics

- **Time Saving:** Associative linking between 2D, 3D, excel table such as BOM, simulation result and etc.
- **Cost Saving:** Utilize Finite Element Analysis within SolidWorks interface that could help them to optimize the design and material saving up to 60%.
- **Manufacturability:** The output from SolidWorks could be directly used for CNC machine and engraving machine.
- **Collaboration:** User friendly and Easy-to-Use interface of SolidWorks that enable us to communicate with external customers and internal designers. Learning curve for fresh designers has been reduced about 50%.
- **Quality:** Able to detect collision and interference between parts in assembly during design stage that improve our design cycle time 50%.

Industry:

*Industrial Machinery & Equipment
(R&D and Manufacturing)*

Previous CAD (year of using):

AutoCAD, SpaceClaim (1 1/2 years)

Product(s) Used (year of using):

SolidWorks (2 years)

Challenge

- Modelling function of previous CAD (Spaceclaim) does not meet our requirements as it was hard to control profile and extension.
- Old school design in 2D Autocad required a lot of time to create a 3D part. In addition, we were unable to determine the actual assembly condition as well. We have lost confidence on the outcome from softwares that cannot integrate with our machines perfectly and cause issues such as inaccurate dimension and missing edges.
- Customers hardly get to see the real assembly and part during presentation and also SOP with proper images to production is difficult to be produced. Communication barrier with 2D drawing decrease our working effectiveness and efficiency.

Solution

- Reduce design cycle time by implementing 3D solutions.
- We choose only one type 3D CAD software to be used within company rather than buying different software because SolidWorks is multifunctional and enables us to do all that we need.
- Command button in SolidWorks is easy-to-use and reduce our design error.
- Performance of photo rendering had been improved by utilizing add-in function of PhotoView360 in SolidWorks compared to previous rendering software.
- We declare SolidWorks as a "multi-tasking" software that can help us complete all the task in shortened time such as 3D visualization, validate and analyse designs for quality guarantee, animation and motion video creation for Standard Operation Procedure showcase.

About IME Technology

IME TECHNOLOGY is the most established SolidWorks Certified Sales, Training and Support Centre in this region with 19 years of experiences that we learned from our customers. Through innovation, we are committed to providing a wide range of professional services to our valued customers. Leading by 2 SolidWorks Elite Engineers and a backup of 8 certified SolidWorks expert (CSWE), IME technical support team will ensure the partnership between SolidWorks, IME and our customer will grow, shine and sustain. Our complete total solutions include 3D design, Analysis, Flow Simulation, Data Management, Technical Documentation and training services. Get the best solutions from the best provider in Malaysia.



IME TECHNOLOGY SDN. BHD. (356192-T)

22A, Jalan PJS 1/46, Petaling Utama, 4
6150 Petaling Jaya, Selangor, Malaysia.

Tel : +603-7783 6866

Fax : +603-7783 4384

Technical Support:
swsupport@cadcam.com.my

www.cadcam.com.my
www.imetech.com.my